

PROJECT FOR TERM II

CLASS VIII

SCIENCE

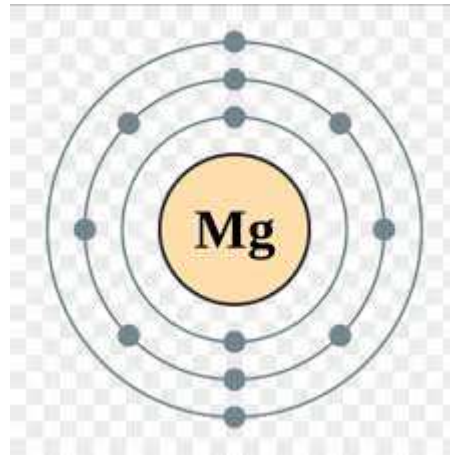
Question : PREPARE THE MODEL OF THE FOLLOWING ELEMENTS GIVEN BELOW. DIAGRAM OF ELECTRONIC CONFIGURATION ARE GIVEN FOR YOUR REFERENCE. (Any six, you can do either 3 dimensional structure or the simple one) **LAST DATE OF SHOWING: 19.12.2020**

Distribution of electron

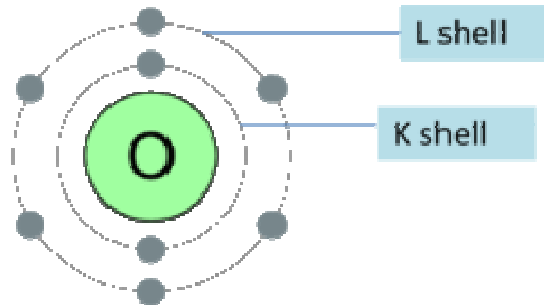
Shell and 'n' value	Max. Electrons in the Electron Configuration
K shell, n=1	$2 \times 1^2 = 2$
L shell, n=2	$2 \times 2^2 = 8$
M shell, n=3	$2 \times 3^2 = 18$
N shell, n=4	$2 \times 4^2 = 32$



ELECTRONIC CONFIGURATION OF CHLORINE



ELECTRONIC CONFIGURATION OF MAGNESIUM

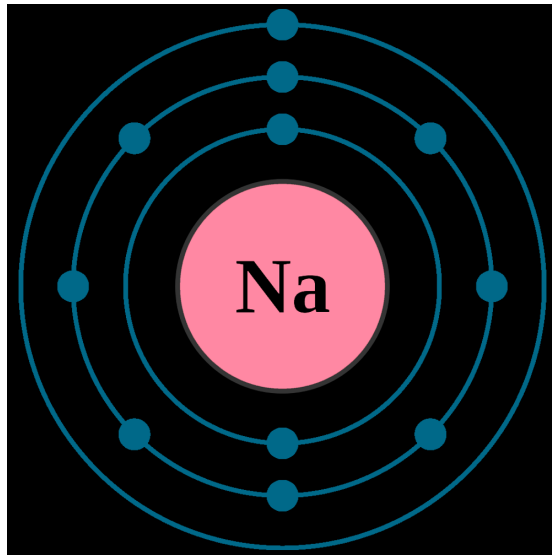


Oxygen (2,6)
(8 electrons = 1st and 2nd orbit)

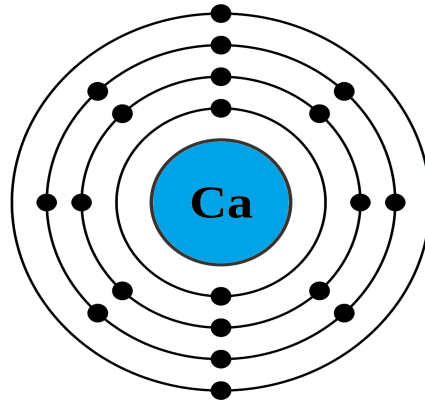
ELECTRONIC CONFIGURATION OF OXYGEN



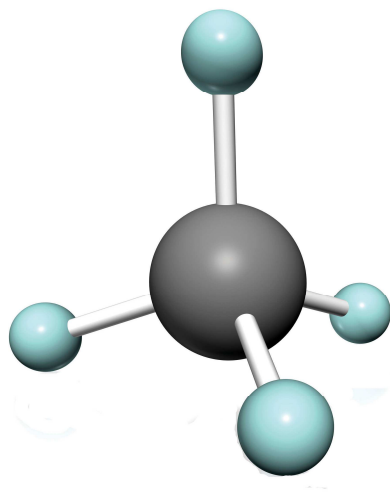
ELECTRONIC CONFIGURATION OF NITROGEN



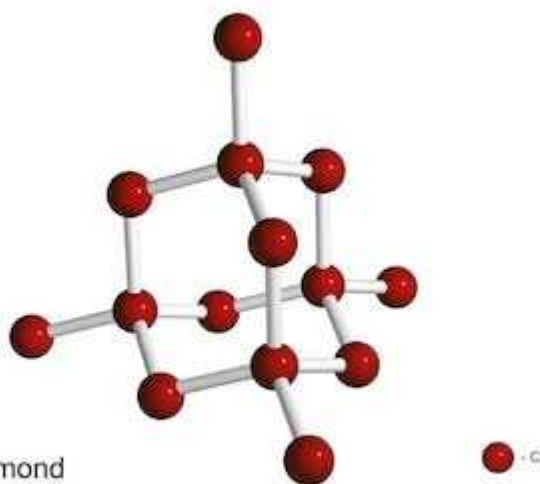
ELECTRONIC CONFIGURATION OF SODIUM



ELECTRONIC CONFIGURATION OF CALCIUM



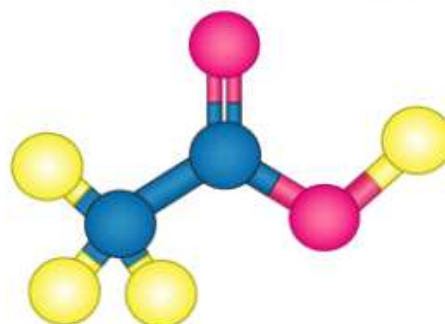
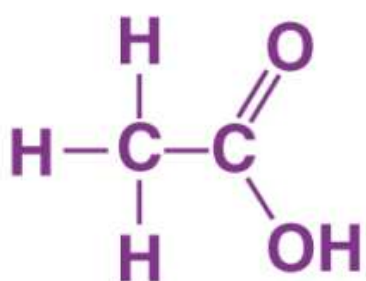
THREE DIMENSIONAL STRUCTURE OF METHANE (CH₄)



Diamond

shutterstock.com · 24510613

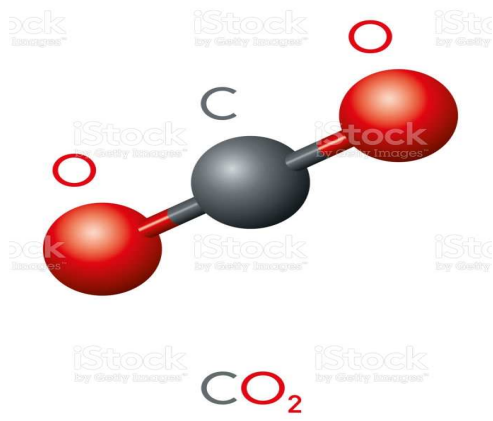
THREE DIMENSIONAL STRUCTURE OF DIAMOND



BYJU'S
The Learning App

© Byjus.com

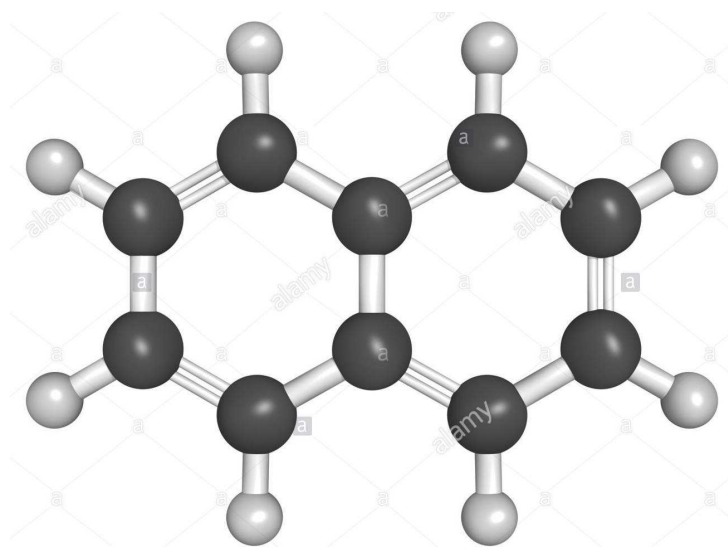
THREE DIMENSIONAL STRUCTURE OF ACETIC ACID



THREE DIMENSIONAL STRUCTURE OF CARBONDIOXIDE



THREE DIMENSIONAL STRUCTURE OF WATER



 alamy stock photo

 FR86YM
 www.alamy.com

THREE DIMENSIONAL STRUCTURE OF NAPHTHALENE